

CATALOG  
2025

**keu**

**FAMILY & EVOQUE**



003 **INTRO**



004 **KEU FAMILY & EVOQUE**

005 BATHROOM

006 BEDROOM

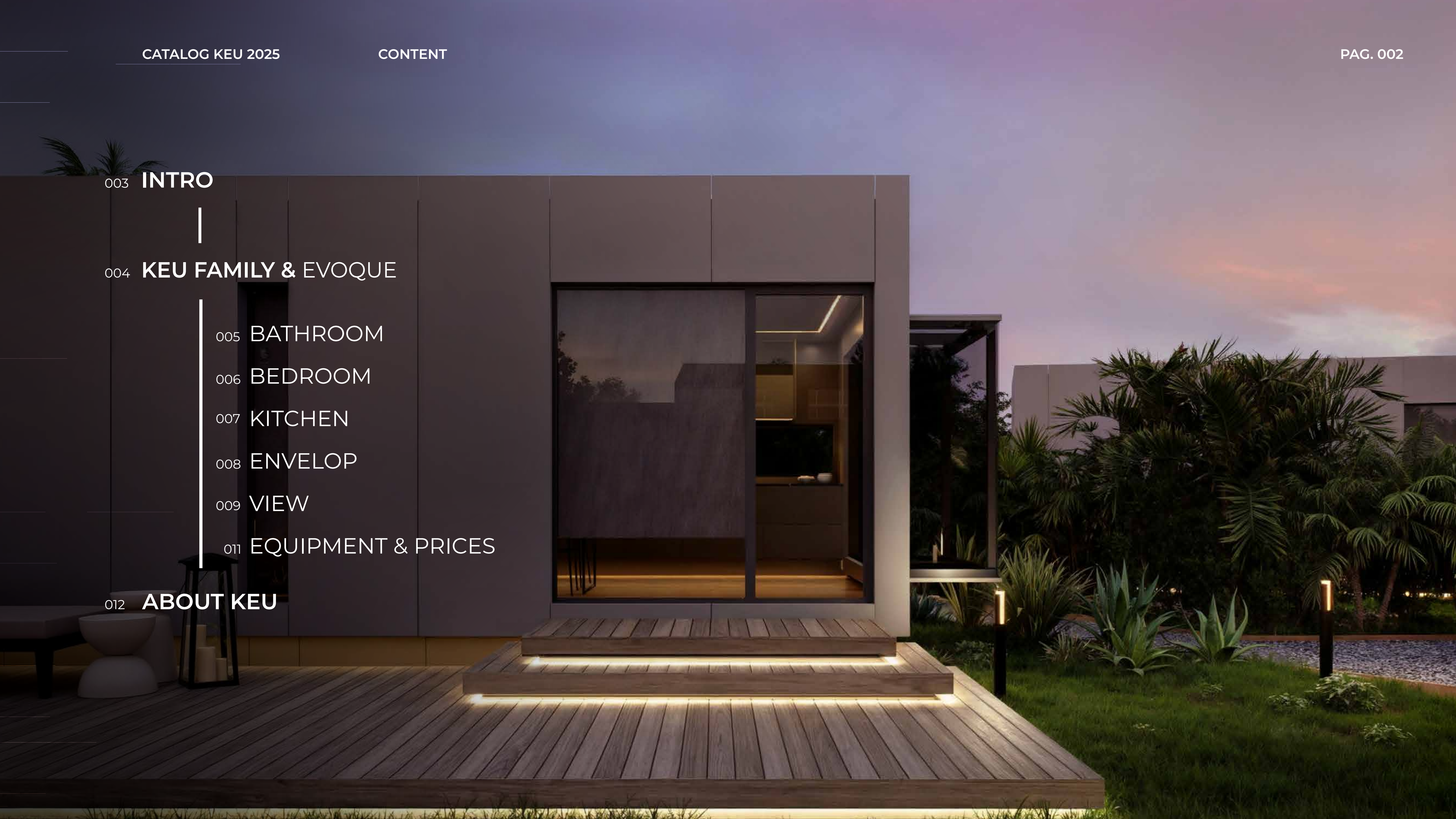
007 KITCHEN

008 ENVELOP

009 VIEW

011 EQUIPMENT & PRICES

012 **ABOUT KEU**





# YOUR HOME ANYWHERE

**AT KEU, WE REDEFINE LUXURY LIVING.**

Inspired by the design and engineering of the most exclusive nautical world, we have created a collection of prefabricated homes that blend technical precision with sophisticated design. Our homes are uniquely adaptable to any location, whether it be by the coast, in the mountains, or within an urban environment. KEU offers more than just a place to live; it embodies a lifestyle of elegance, innovation, and exclusivity.





# FAMILY & EVOQUE

ELEMENT: €99.900

ESSENTIAL: €131.900

CONFORT: €160.900

LUXURY: €190.900

LEARN MORE PAG. 011 ▼



# BATHROOM

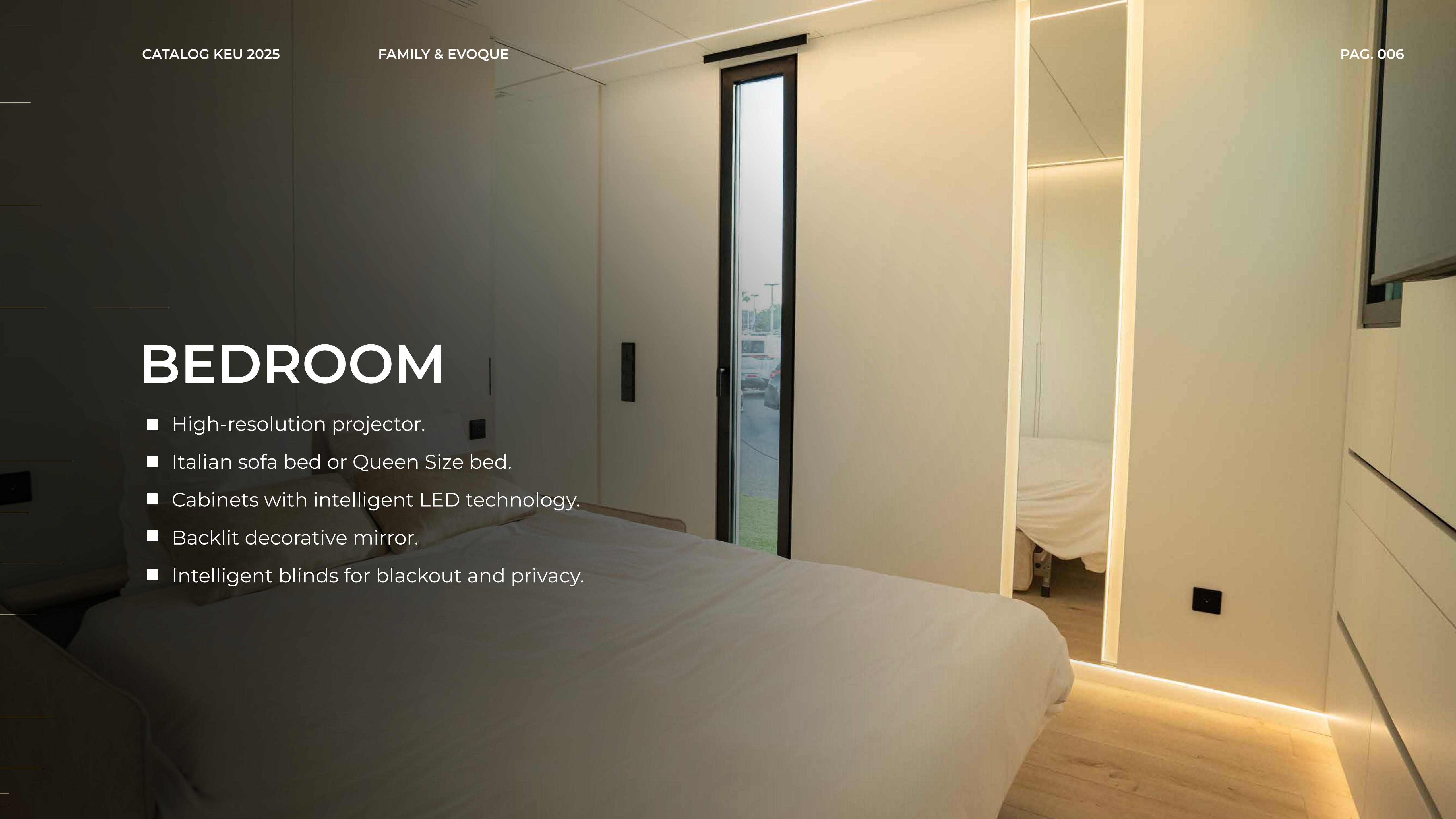
- Intelligent blinds for blackout and privacy.
- Large-format Italian porcelain shower cladding.
- Bathroom cabinet with integrated Italian porcelain sink.
- Built-in faucets from the prestigious brand Roca.
- Wall-hung toilet by Roca.
- Custom-made floor-to-ceiling glass shower screen.





# BEDROOM

- High-resolution projector.
- Italian sofa bed or Queen Size bed.
- Cabinets with intelligent LED technology.
- Backlit decorative mirror.
- Intelligent blinds for blackout and privacy.





# KITCHEN

- Suspended Italian design kitchen.
- Italian porcelain countertop with integrated porcelain sink.
- Appliances from the prestigious brands Bosch or Siemens.
- Faucets by Roca.
- Decorative structure with glass shelves and concealed extractor.

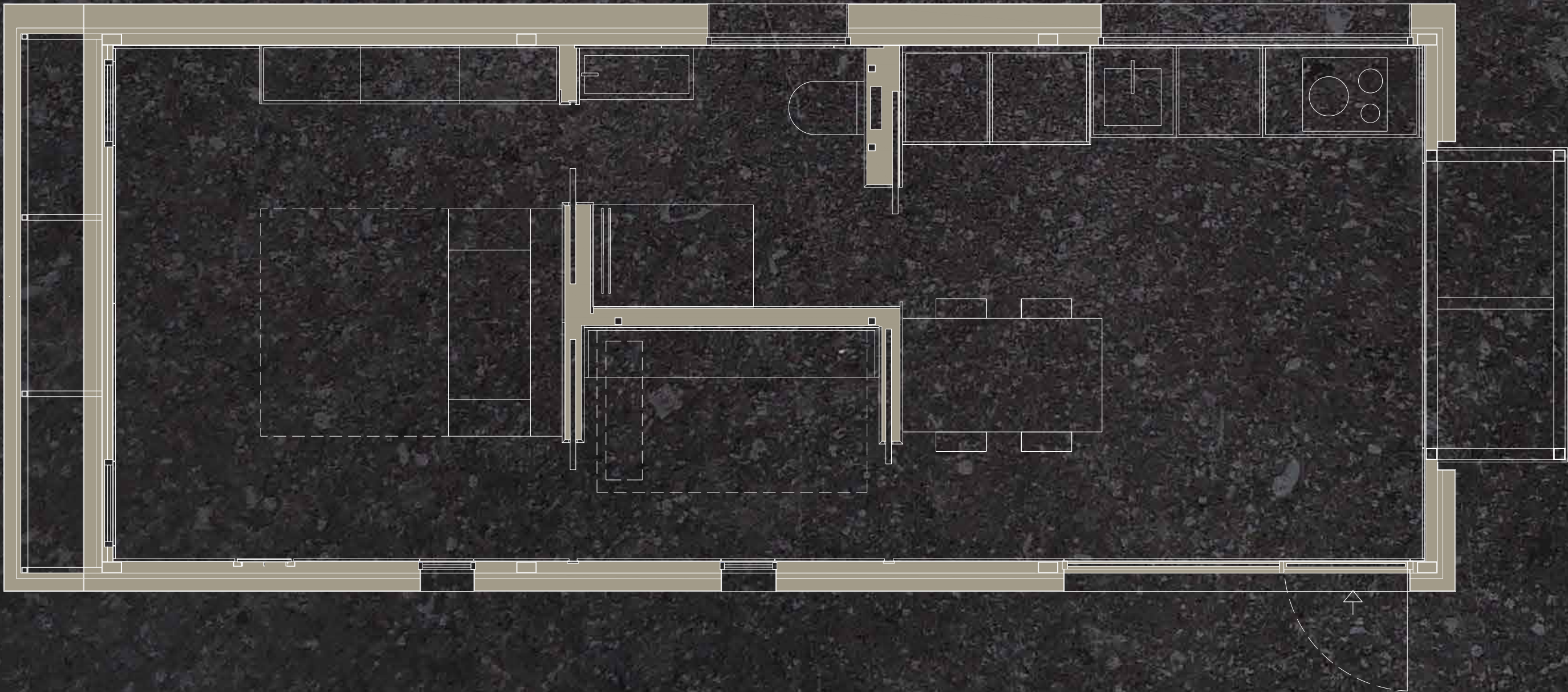


# ENVELOPE

- Flooring: Water-resistant wood-look flooring.
- Walls and Ceilings: Premium lacquered marine board finish, resembling the interior of a yacht, with concealed blinds integrated into ceiling slots.
- Windows: High-quality lacquered aluminum, 65 mm thick, with security glass featuring solar control and low emissivity
- Thermal Insulation: 4-inch (100 mm) facade insulation and 8-inch (200 mm) roof insulation to provide exceptional thermal efficiency..



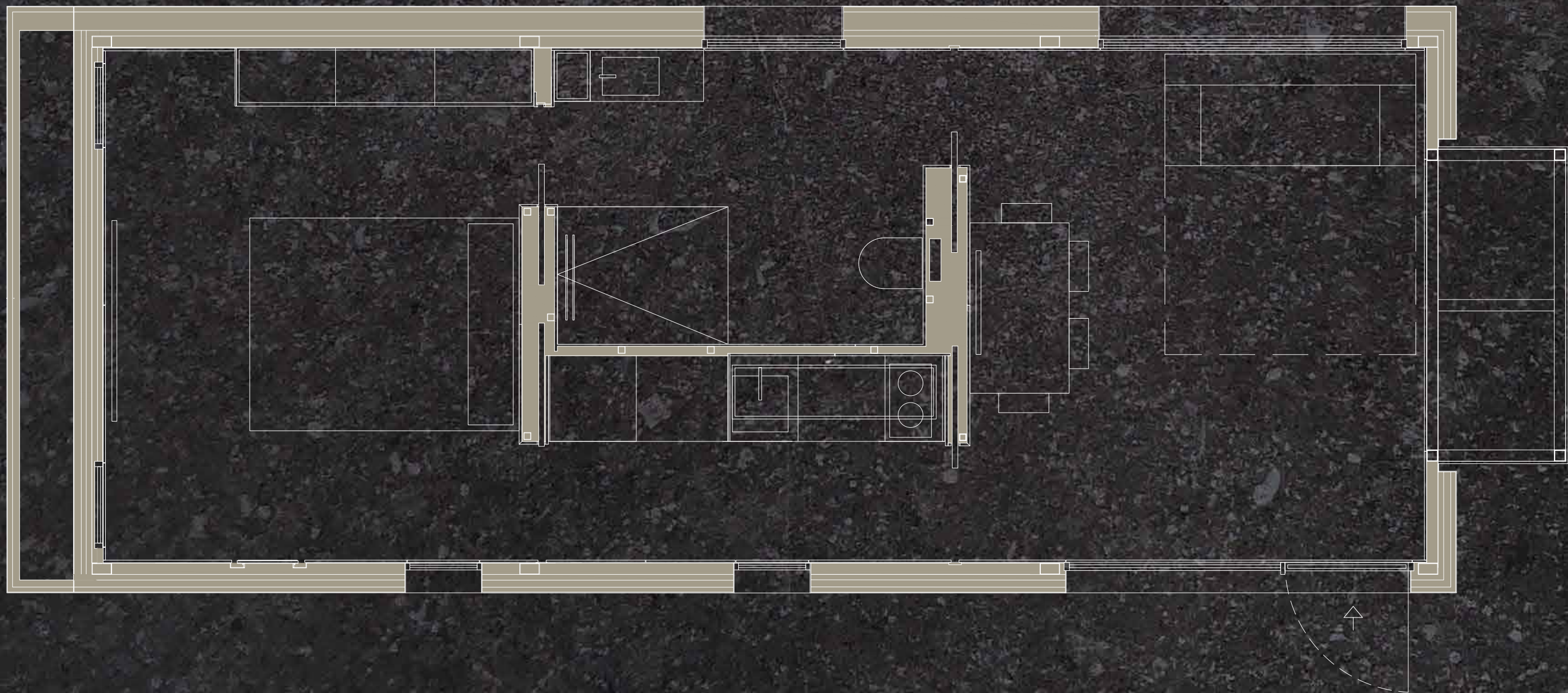




**keu** FAMILY

LENGTH	36' 1"	11 M
WIDTH	13' 7"	4,12 M
HEIGHT	12'	3,67 M
WEIGHT	26455 LB	12.000 KG
SPACE LIVING	409 FT <sup>2</sup>	38 M <sup>2</sup>
GROSS AREA	473 FT <sup>2</sup>	44 M <sup>2</sup>





**keu** EVOQUE

LENGTH	36' 1"	11 M
WIDTH	13' 7"	4,12 M
HEIGHT	12'	3,67 M
WEIGHT	26455 LB	12.000 KG
SPACE LIVING	409 FT <sup>2</sup>	38 M <sup>2</sup>
GROSS AREA	473 FT <sup>2</sup>	44 M <sup>2</sup>



# ELEMENT

€99.900  
INCLUDES ▼

- ELECTRICAL PRE-INSTALLATION
- FAUCETS
- PRE-INSTALLED FOR SPLIT AIR  
CONDITIONING
- BATHROOM

KEU ELEMENT  
Ideal for Airbnb

# ESSENTIAL

€131.900  
INCLUDES ▼

- EQUIPPED KITCHEN
- AIR CONDITIONING
- FULL BATHROOM
- WARDROBES
- STAIRCASE WITH  
BASIC ACCES

# CONFORT

€160.900  
INCLUDES ▼

- EQUIPPED KITCHEN
- AIR CONDITIONING
- FULL BATHROOM
- PROJECTOR/TV
- HURRICANE PROT.
- BEDROOM BLACKOUT  
SYSTEM
- WARDROBES
- ITALIAN SOFA
- INCLASS CHAIRS
- EXTERIOR LADDER
- OUTDOOR LED

# LUXURY

€190.900  
INCLUDES ▼

- EQUIPPED KITCHEN
- AIR CONDITIONING
- FULL BATHROOM
- PROJECTOR/TV
- HURRICANE PROT.
- BEDROOM BLACKOUT SYST.  
WARDROBES
- ITALIAN SOFA
- INCLASS CHAIRS
- OUTDOOR LED
- OUTDOOR DECK (33 m²)
- HANS GROHE TAPS
- LRG FORMAT PORCELAIN
- SHOWER CABIN
- PREMIUM SHOWER SCREEN
- FROM FLOOR TO CEILING  
UPGRADE OF PREMIUM  
MIELE BRAND ELECTRONIC
- APPLIANCES PRE-INSTALLA-  
TION OF SECURITY CAMERAS

FAMILY & EVOQUE