



keuLITTLE

CATALOG 2025

Smart Living, Anywhere You Need It

YOUR HOME ANYWHERE

At Keu, we believe that home isn't a fixed place, but rather an experience that adapts to your rhythm, your surroundings, and your way of life. Inspired by the precision of nautical design and the harmony of minimalist architecture, we create spaces that blend seamlessly with nature, the city, and the silence.

Each Keu piece is an invitation to reconnect: With your creativity, with your relaxation, with what's essential. Whether on the coast, in the mountains, or in the middle of the garden, Keu Little transforms any place into a personal refuge. It's not just architecture. It's a way of inhabiting the world with intention.



In a world that never stops, **Keu Little** is a respite. A compact, versatile, and elegant retreat that adapts to your pace, your surroundings, and your purpose. Designed for those who value privacy, functionality, and conscious design.





At Keu, quality isn't an attribute: it's a promise.

We select materials that not only stand the test of time, but also enhance it. Woods treated with nautical precision, tempered glass that amplifies natural light, and finishes that invite touch and contemplation.

Each home is built as a unique piece, with standards that surpass those of conventional architecture. We don't work with the ordinary, but with what transforms. Because we understand that your space isn't just functional: it's emotional.



We design for those who value the invisible: the silence of a door that closes quietly, the warmth of breathing wood, the harmony of an environment that doesn't compete, but accompanies.

***At Keu, we don't sell houses.
We create livable experiences.***

From the first contact, our team becomes your ally: we listen to your ideas, understand your needs, and guide you through every decision. Because we know that choosing a space is much more than a purchase: it's an act of identity.



BATHROOM

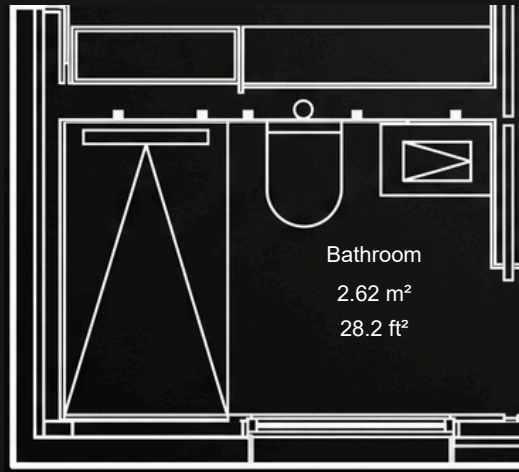
From the large-format Italian porcelain to the precision-crafted built-in faucets, every element was chosen to elevate the experience.

The custom-made glass screen, the integrated sink, the wall-hung toilet: everything speaks of fluidity, visual clarity, and quiet comfort.

"Here, every shower is a pause. Every texture, an invitation to rest."

Smart blinds regulate light and privacy with a simple gesture. The compact design doesn't sacrifice elegance: it enhances it. Because even well-being deserves to be a centerpiece.





100% Customizable

Wall-mounted vanity unit with integrated porcelain sink

-Porcelain countertop

-Porcelain-clad shower with matte black enclosure

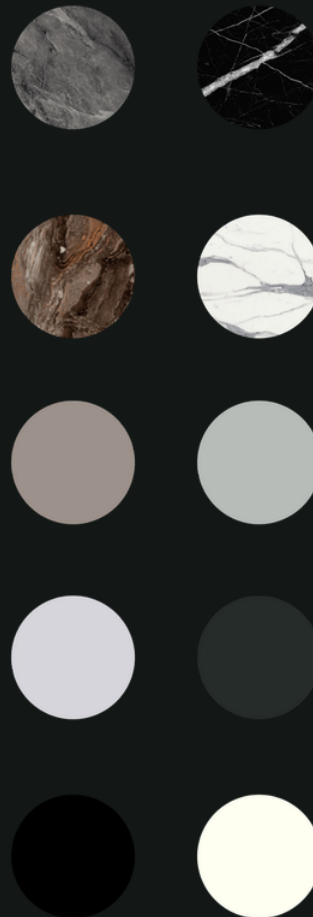
-Wall-hung toilet with built-in cistern

-Backlit mirror (31.5" x 31.5") (0.80 m x 0.80 m)

-Matte black faucets

-Integrated storage

SHOWER FINISH



TAPS COLLECTION





BEDROOM

Designed to envelop you without intruding, this space combines fine materials, soft lighting, and an atmosphere that invites pause.

Each texture was chosen to accompany rest.

Each line, to suggest calm.

Every detail, to remind you that comfort doesn't require excess, only intention.

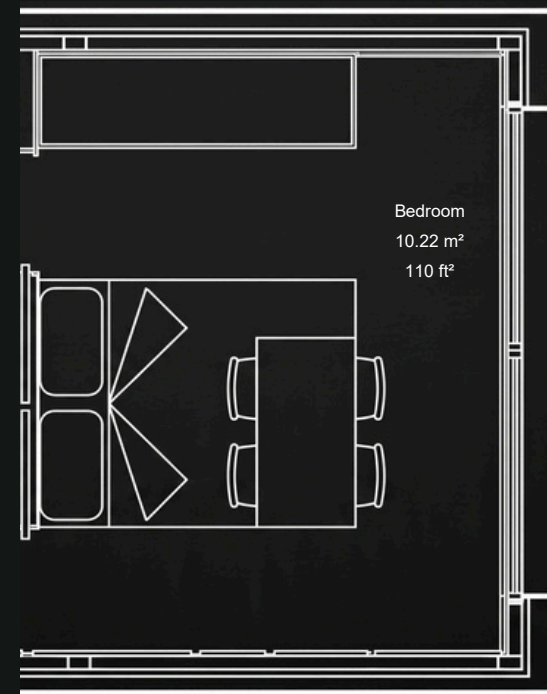
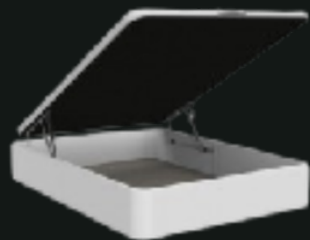
"Here we don't sleep. We live in rest."

The bed blends into the space like a sculptural piece.

The interior finishes create a warm, intimate, and enveloping feeling.

Cross ventilation and light control allow you to adapt the atmosphere to your rhythm and rituals.

ACABSAODFOA D- BEE DDUCHABED WITH CANAPY



100%
Customizable

- Queen-size pull-down bed with storage
- Built-in wardrobe with hanging rail

KITCHEN

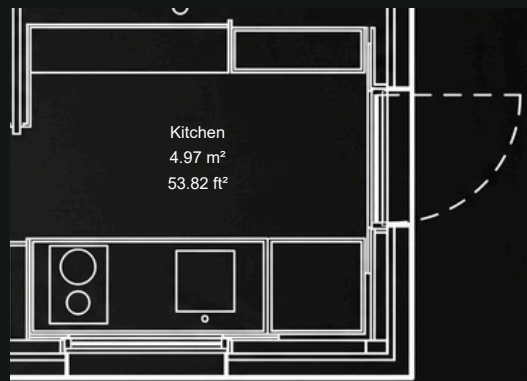
Every element has a purpose.

From the natural wood finishes to the hidden storage system, everything is designed to make the act of cooking feel fluid, intimate, and pleasurable.

"It's not the size of the space that matters, but the quality of the moment."

Warm lighting, integrated appliances, and a smart layout allow for seamless preparation, sharing, and enjoyment. It's a kitchen that doesn't disrupt the design: it elevates it.





100% Customizable

Suspended design on an exposed metal frame with backlighting.

Porcelain countertop with integrated 16" x 16" / 0.40 m x 0.40 m sink

Lacquered cabinetry with matching drawers and cabinets.

Includes:

- 2- or 4-zone ceramic cooktop (depending on configuration)
- Integrated extractor hood
- Integrated refrigerator
- Hidden waste bin
- Cutlery included
- Metal drawer organizers



OUTDOOR CABINETS



TAPS COLLECTION



PORCELAIN TILES





KEU360

Immerse yourself in the Keu experience from anywhere in the world. Our 360° tour allows you to explore every corner of the module as if you were already inside: feel the light, discover the materials, understand the layout. *It's not a simulation. It's the first step toward inhabiting your space.*

[START TOUR](#)

Home automation

Because comfort can also be programmed.

Each piece is equipped with a comprehensive home automation system that transforms the way you live.

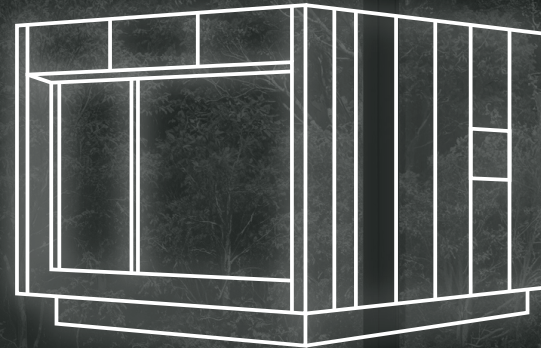
The light adapts to your mood. The temperature responds to your routine. Security activates without you noticing.

Everything works in harmony, with no visible cables or complex commands. Just you and your space, in sync.

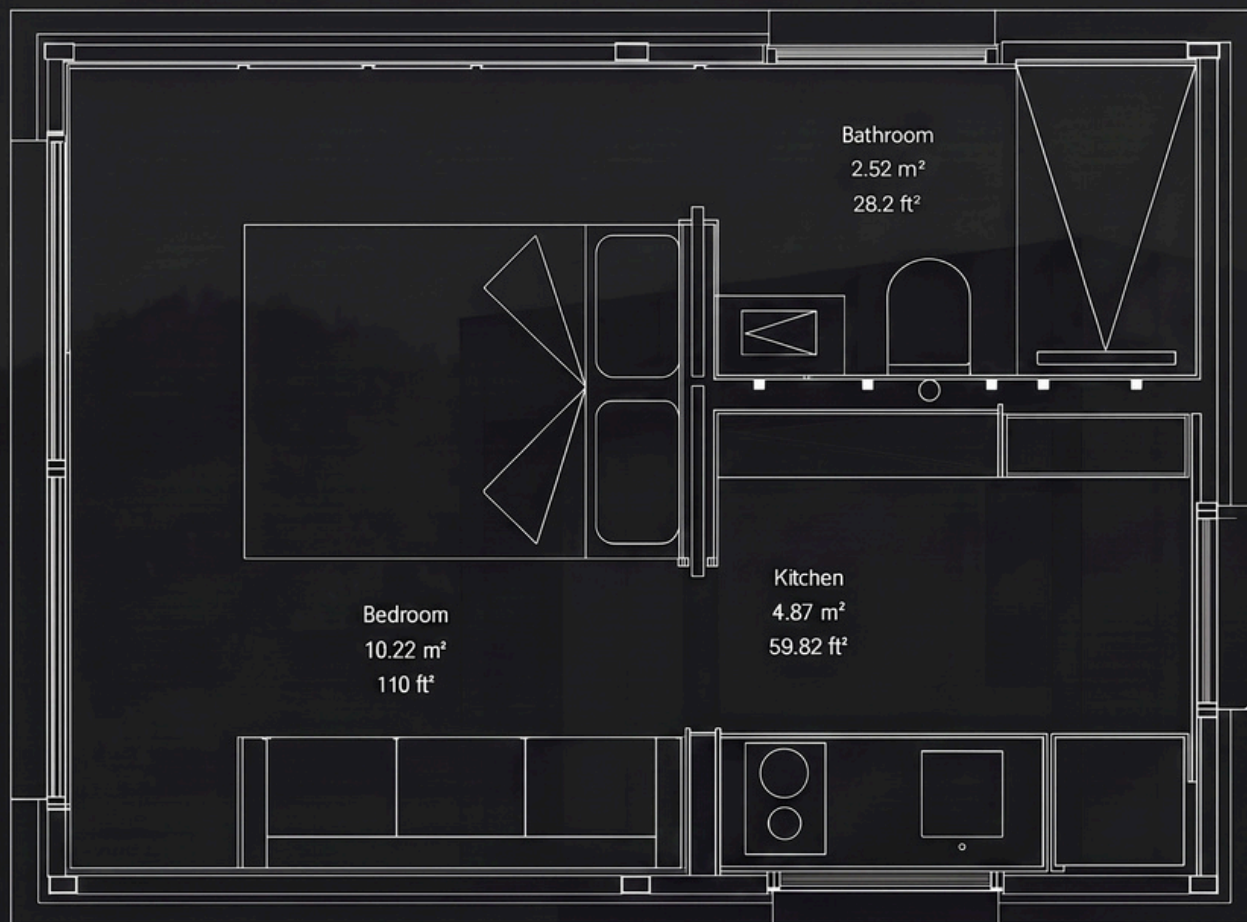
“You don't need to touch a switch. Your home already knows what you need.”

From your phone, tablet, or voice assistant, you can control:

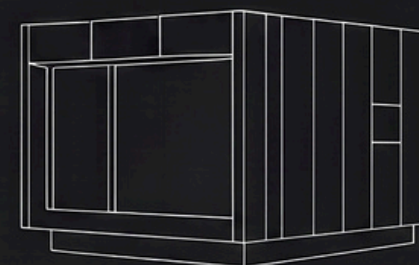
- Ambient and spot lighting
- Smart curtains and blinds
- Air conditioning and ventilation
- Security and remote access
- Music, sound, and ambiance
- Preset scenarios for work, rest, or inspiration



Every square meter in Keu Little was designed with intention. Bedroom, kitchen, and bathroom connect in a fluid sequence, where functionality does not compete with aesthetics. Compact, efficient, and full of possibilities: this is how design is experienced when it is well-thought-out.



LENGTH	18' 4"	5.60 M
WIDTH	13' 6"	4.12 M
HEIGHT	11' 5"	3.50 M
WEIGHT	17.636 LB	8.000 KG
SPACE LIVING	194 FT ²	18 M ²
GROSS AREA	248 FT ²	23M ²



KEU CONFORT

FITTED KITCHEN

(Whirlpool Appliances Series)

FULL BATHROOM

(Floor-to-ceiling shower)

HURRICANE KIT CAT. 5

(Only applicable in Caribbean areas)

AUTOMATIC AIR CONDITIONING

(Mitsubishi Model)

BACKLIT WARDROBES

55"/1.4 m SAMSUNG TV

CARPENTRY AND ARMORED GLASS

(Alta eficiencia energética-Serie Kline)

BLACKOUT SYSTEM

(Motorized Blinds)

EXTERIOR LIGHTING (Perimeter LED)

EXTERNAL STAIRS 48,4 ft²/ 4.5 m²

(Encapsulated Flooring)

ITALIAN SOFA/BED

INCLASS CHAIRS (Confort Range)

ELECTRONIC LOCK

ULTRA-MATTE PET INTERIOR FINISHES



TECHNICAL COORDINATION
SERVICE

KEU LUXURY

FITTED KITCHEN

(Bosch Appliances Series)

FULL BATHROOM

(Floor-to-ceiling shower with alcove)

HURRICANE KIT CAT. 5

(Only applicable in Caribbean areas)

AUTOMATIC AIR CONDITIONING

(Mitsubishi Model)

BACKLIT WARDROBES

+ ACCESSORIES (Cutlery Trays, Dividers, etc.)

55"/1.4 M SAMSUNG TV

+ SOUND SYSTEM (Sonos)

CARPENTRY AND ARMORED GLASS

(High Energy Efficiency - Kline Series)

BLACKOUT SYSTEM

(Motorized Blinds)

EXTERIOR LIGHTING (Perimeter LED)

140 ft²/13 m² Exterior Deck

(Encapsulated Flooring)

ITALIAN SOFA/BED

INCLASS CHAIRS (Premium Range)

ELECTRONIC LOCK

ULTRA-MATTE PET INTERIOR FINISHES

HOME AUTOMATION (smart home)



TECHNICAL COORDINATION
PROJECT MANAGEMENT

Personalized support at every stage

At Keu, we believe that every space begins with a conversation.

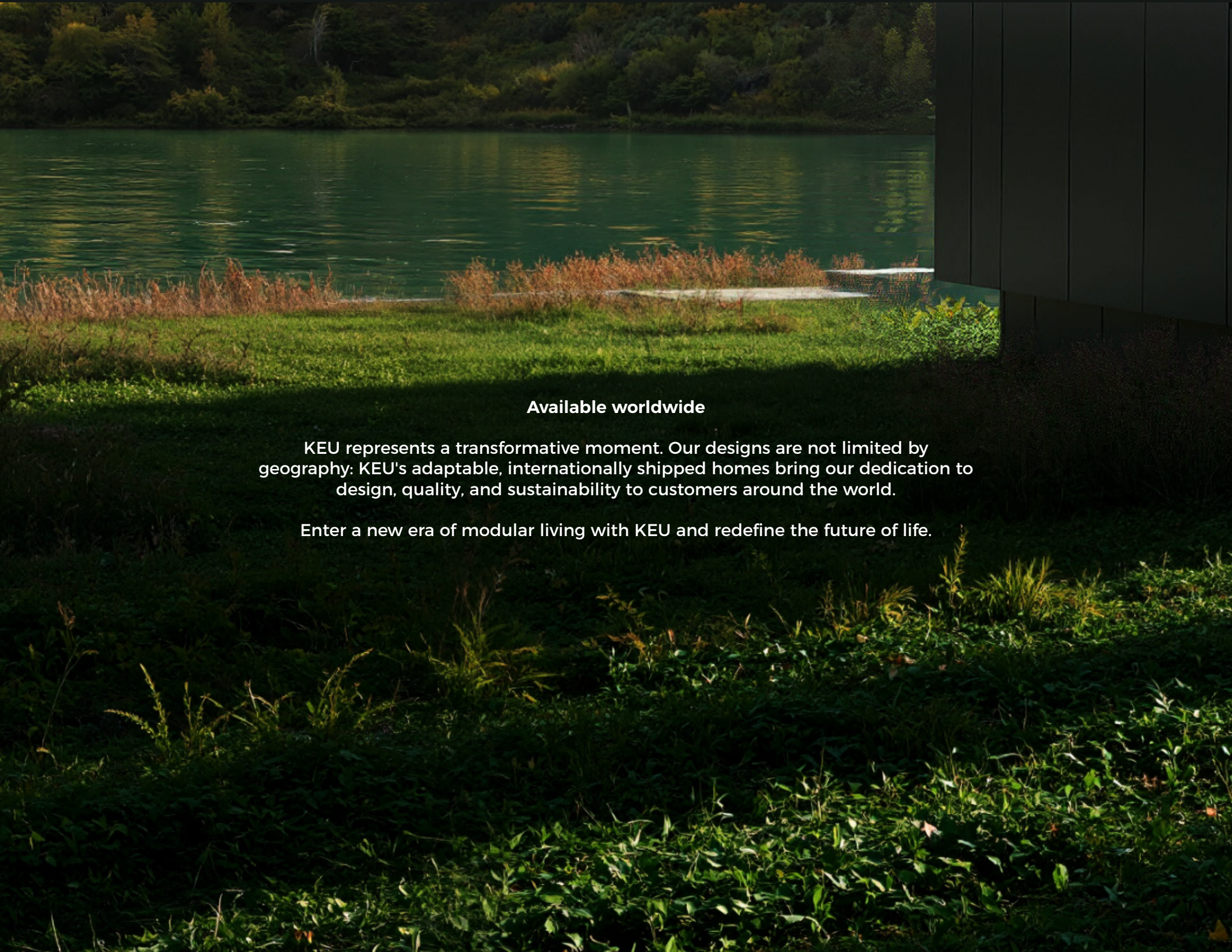
That's why, more than selling homes, we build relationships.

From the first contact, we support you in every decision: from imagining your ideal space to choosing the materials that will make it unique.

Our team guides you throughout the entire process:

- Initial exploration: Together we visualize how Keu fits into your environment and lifestyle.
- Custom design: You select finishes, textures, and configurations with expert guidance.
- Production and assembly: We coordinate every detail so the process is smooth, transparent, and without surprises.
- Close after-sales service: We stay with you, because the connection doesn't end with delivery.





Available worldwide

KEU represents a transformative moment. Our designs are not limited by geography: KEU's adaptable, internationally shipped homes bring our dedication to design, quality, and sustainability to customers around the world.

Enter a new era of modular living with KEU and redefine the future of life.



keuLITTLE

CATALOG 2025

Smart Living, Anywhere You Need It